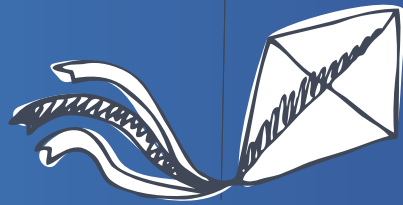




Air

distribution
product



Cla 
Air distribution product



The Company

C.L.A. was established in 1975 as a manufacturer company of air conditioning system components. Among its customers: dealers, air handling units producers and fans producers.

Time passed and the factory evolved reaching the industrial dimensions of today. C.L.A. with its 3 buildings covers an area **over 15.000 m²**, it employs **over 150 people** which make use of advanced machineries.

We propose to the European market as OEMs (Original Equipment Manufacturer) to customize our products for commercial companies distributing them under their own brand, to the AHU producers and a fans producers.

In order to meet greater and greater market requests always looking for customized solutions CLA has focused on its technical dep.

... we help our customers to find solutions!

Certificates



Since 2007 C.L.A. has obtained and maintains **ISO 9001**. Compliance with the requirements of this provision shows that the system of quality management of the company is recognized as conforming to a standard of excellence.

Since 2019 C.L.A. has obtained the certificate for welding at level **CL2** according to UNI EN 15085-2



Our Configurator

C.L.A. provides the software: a simple and intuitive tool which allow the user the products configuration according to the specific requirements of the project, its aim is obtaining the right product with the perfect performance and economic advantages.

Codes, descriptions, dimensional drawings, prices and performances of the configured product, can be achieved after a few simple selection steps, everything resumed in a pdf datasheet customizable with the customers brand.

Our Technical Sales Department is available to support the selection of the product.



RECTANGULAR DAMPERS

The multileaf dampers are suitable for the control and adjust of the air flow in air conditioning or ventilation ducts

- Dimensions:
 - Base from 100 to 4000 mm
 - Height from 110 to 2010 mm
- Materials:
 - Galvanized Steel
 - Stainless Steel
 - Aluminium
- Distance between blades:
 - 50 - 100 - 150 - 200 mm
- Bearings: Nylon, Bronze, Teflon
- Transmission: special plastic gears
 - External movement drive in galvanized steel or INOX
- Blades Leakage in according EN 1751: 1 to 4
- Frame Leakage in according EN 1751: A to C
- Drive:
 - Hand Drive
 - Electric actuator
 - Pneumatic actuator
- Options:
 - Wire mesh
 - Insect mesh
 - Paint with choice of color

CIRCULAR DAMPERS

The multileaf dampers are suitable for the control and adjust of the air flow in air conditioning or ventilation ducts

- Diameters: from Ø80 to Ø2000 mm
- Materials:
 - Galvanized Steel
 - Stainless Steel
 - Aluminium
- Bearings: Nylon, Bronze, Teflon
- Blades Leakage in according EN 1751: 1 to 4
- Cl- Frame Leakage in according EN 1751: A to C
- Drive:
 - Hand Drive
 - Electric actuator
 - Pneumatic actuator
- Options:
 - Connection flanges
 - Paint with choice of color

RECTANGULAR OVERPRESSURE DAMPERS

The overpressure dampers are suitable for the automatic outlet or inlet of the air flow in air conditioning or ventilation duct

- Dimensions:
 - Base from 200 to 2000 mm
 - Height from 100 to 2010 mm
- Materials:
 - Galvanized Steel
 - Stainless Steel
 - Aluminium
- Distance between blades:
 - 50 - 100 mm
- Bearings: Nylon or Bronze
- Blades Leakage in according EN 1751: 1 to 4
- Frame Leakage in according EN 1751: A to C
- Options:
 - Wire mesh
 - Insect mesh
 - Paint with choice of color

CIRCULAR OVERPRESSURE DAMPERS

The overpressure dampers are suitable for the automatic outlet or inlet of the air flow in air conditioning or ventilation duct.

- Diameters:
 - from Ø100 to Ø2000 mm
- Materials:
 - Galvanized Steel
 - Stainless Steel
 - Aluminium
- Bearings: Nylon, Bronze, Teflon
- Options:
 - Connection flanges
 - Paint with choice of color





RECTANGULAR VAV UNIT

The rectangular VAV unit is suitable for the control and the adjust of the air flow in the VAV system

- Dimensions:
 - Base from 200 to 1200 mm
 - Height from 110 to 610 mm
- Materials:
 - Galvanized Steel
 - Stainless Steel
- Operation range:
 - From 20 to 1000 Pa
- Inlet sensor for the measurement and control of air flow
- Drive: electric actuator
- Options:
 - Damper in class 4 EN 1751
 - Silencer
 - Acousting casing

VAV BOXES - SINGLE DUCT

The VAV boxes are suitable for the control and the adjust of the air in VAV system

- Diameters: from Ø125 to Ø630 mm
- Materials:
 - Galvanized Steel
 - Stainless Steel
- Operation range:
 - From 20 to 1500 Pa
- Inlet sensor for the measurement and control of air flow
- Rectangular outlet
- Regulation: Damper class 4 EN 1751
- Acoustic side with mineral wool protected by fiber glass
- Fire resistance in according to EN 13501: class A1
- Drive: electric actuator
- Options:
 - Silencer
 - Acousting casing
 - Reheat coil
 - Spigot with equalized section

VAV BOXES - DOUBLE DUCT

The VAV boxes are suitable for the control and the adjust of the air in VAV system

- Diameters: from Ø125 to Ø 630 mm
- Materials:
 - Galvanized Steel
 - Stainless Steel
- Operation range: from 20 to 1500 Pa
- Inlet sensor for the measurement and control of air flow
- Rectangular outlet
- Regulation: Damper class 4 EN 1751
- Acoustic side with mineral wool protected by fiber glass
- Fire resistance in according to EN 13501: class A1
- Drive: electric actuator
- Options:
 - Silencer
 - Acousting casing
 - Reheat coil
 - Spigot with equalized section

CIRCULAR VAV UNIT

The circular VAV units are suitable for the control and the adjust of the air in VAV system

- Diameters: from Ø125 to Ø630 mm
- Materials:
 - Galvanized Steel
 - Stainless Steel
- Operation range: from 20 to 1500 Pa
- Inlet sensor for the measurement and control of air flow
- Drive: electric actuator
- Options:
 - Silencer
 - Acousting casing
 - Reheat coil
 - Spigot with equalized section



REGULATION



ACOUSTIC

CIRCULAR SILENCERS

The sound attenuators are used to reduce the noise in the air conditioning or ventilation ducts

- Diameters: from Ø250 to Ø2000 mm
- Length 1xØ, 1.5xØ or 2xØ
- Materials:
 - Galvanized Steel
 - Stainless Steel
 - Aluminium
- Acoustic material: Rock wool with fiber glass protection or hygienic version
- Fire resistance according to EN 13501:
 - class A1
- Options:
 - Internal ogive
 - Wire mesh
 - Paint with choice of color

RECTANGULAR SOUND ATTENUATORS/ACOUSTIC BAFFLES

The sound attenuators are used to reduce the noise in the air conditioning or ventilation ducts

- Dimension:
 - on-line configurator www.cla.it
- Materials:
 - Galvanized Steel
 - Stainless Steel
 - Aluminium
- Baffles thickness: 50 - 100 - 150 - 200 - 250 - 300 - 350 mm
- Acoustic material: Rock wool with fiber glass protection or hygienic version
- Fire resistance according to EN 13501: class A1
- Options:
 - Wire mesh
 - Aerodynamic profile on the baffles
 - Paint with choice of color

ALVEOLAR SILENCER

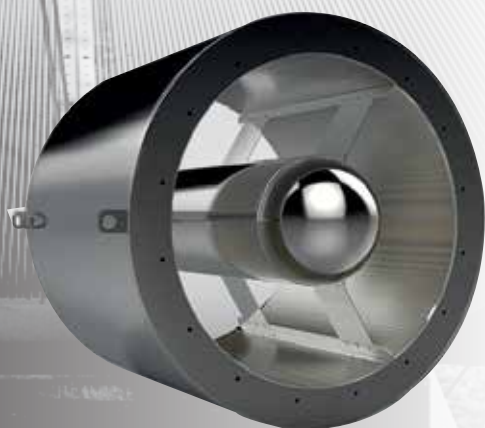
Component used to reduce noise in ventilation systems combining a high noise reduction, low pressure drop and a versatility of use in many situations. The product is delivered to be assembled directly on site and fixed to the canal with adhesive clips thus reducing transport costs and delivery times.

- Dimensions: 150x150x600 mm
- Surface: fiber glass tissue
- Acoustic material: glass wool
- Fire resistance according to EN 13501: class A2

ACOUSTIC LOUVRE

The acoustic louvres are suitable for double function, inlet or exhaust air with noise attenuation

- Dimensions:
 - Base from 300 to 2500 mm
 - Height from 300 to 2250 mm
 - Thickness 140 - 280 - 300 - 600 mm
- Materials:
 - Galvanized Steel
 - Stainless Steel
 - Aluminium
- Distance between blades:
 - 100 - 150 mm
- Acoustic material:
 - Rock wool with fiber glass protection or hygienic version
- Fire resistance according to EN 13501: class A1



RETURN AND SUPPLY GRILLES

The external louvres are suitable for exhaust and inlet air, the louvre can be mounted in outside wall with a sub-frame

- Dimensions:
 - Base from 200 to 3000 mm
 - Height from 100 to 3000 mm
- Materials:
 - Galvanized Steel
 - Stainless Steel
 - Aluminium
- Distance between blades: 20 - 50 - 100 mm
- Opzioni: weatherproof profile on the blades - adjust able blades

INDUSTRIAL SUPPLY GRILLES

The supply grilles are suitable for wall and duct installation for the supply of cooled and heated air in industrial applications

- Dimensions:
 - Base from 200 to 2000 mm
 - Height from 200 to 2000 mm
- Materials:
 - Galvanized Steel
 - Stainless Steel
 - Aluminium
- Distance between blades: 50 mm
- Options: single or double adjustable blades

PLENUM

The plenum are a special metal box for the grilles or diffusers

- Version: request from the customer
- Dimension : from the diffuser or grilles
- Materials:
 - Galvanized Steel
 - Stainless Steel
 - Aluminium
- Option: insulated or insonorised version

DIFFUSERS

The diffusers can be use in supply or return in all the ventilation system

- Version:
 - Swirl
 - Perforated
- Dimension: request from the customer
- Materials:
 - Galvanized Steel
 - Stainless Steel
 - Aluminium
- Option:
 - Paint with choice of color



DIFFUSION

CEILING ABSOLUTE FILTER BOX

The ceiling terminal aer suitable for the installation where is request air cleanliness like hospital or laboratories

- Dimension: like absolute filter size
- Materials:
 - Galvanized Steel Paint
 - Stainless Steel
- Spigot: Circular or rectangular
- Position of spigot: side or top
- Control: 2 pressure measurement points
- Option: regulation damper

SAFETY DUCT HOUSING FOR ABSOLUTE FILTER

The safety duct housing for absolute filter aer suitable for the installation where is request air cleanliness and a safety operation like laboratory or clean room

- Dimension: like absolute filter size
- Materials:
 - Galvanized Steel Paint
 - Stainless Steel
- Closing cover in epoxy-painted steel thickness 2,0 mm with 4 handles; the cover is equipped with ulterior safety device that permits the closure only if the filter is in his exactly mounting position and when the levers is in right position
- Control: 2 pressure measurement points

DUCT FILTER BOX

The duct box for filter are suitable when are requested duct filtration steps

- Dimension: like filter size
- Materials:
 - Galvanized Steel
 - Stainless Steel
- Control: 2 pressure measurement points
- Options: paint with choice of color

FILTER RETURN GRILLE

Component used for safe recirculation of air in rooms requiring high level of cleanliness such as cleanrooms and hospitals.

- Dimensions:
 - Base from 300 to 1000 mm
 - Height from 200 to 800 mm
- Materials:
 - Painted galvanized steel
 - Stainless steel
- Construction details:
 - Prepared for fixing directly to the wall/ceiling and to the plenum
 - Possible regulation damper



FILTER CEILING

Component made with the aim of serving clean rooms, hospitals and, in general, any room that requires very high standards of cleanliness.

- Dimensions: Different sizes available made with modular components
- Materials: Painted galvanized steel - AISI steel
- Special features: Possibility of inserting components necessary for the particular application
- Controls: Differential pressure measurement upstream and downstream of the filtration stage

DROPLET SEPARATOR

The drops separator are suitable for the elimination of a water particles in the air flow

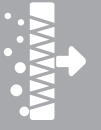
- Dimensions:
 - Base from 500 to 3000 mm
 - Height from 600 to 2200 mm
- Materials:
 - Galvanized Steel
 - Stainless Steel
 - Aluminium
- Distance between blades: 28 - 40 mm
- Bends: from 1 to 5
- Options: hole or spigot for discharge the water

SAND TRAP LOUVRE

The sand tra louvre is used ad pro-filter for the protection of air conditioning plants in areas exposed to extreme levels of industrial pollution

- Dimensions:
 - Base from 300 to 3000 mm
 - Height from 300 to 1500 mm
- Materials:
 - Galvanized Steel
 - Stainless Steel
 - Aluminium
- Options:
 - Wire mesh
 - Insect mesh
 - Paint with choice of color

FILTRATION





SILENCER FOR HEATING PUMPS

This silencer units are designed for heat pumps in order to reduce the noise without changing performance and efficiency.

- Dimension: from size of heating pumps
- Material: Aluzinc®
- Acoustic material: Rock wool with fiber glass protection
- Fire resistance according to EN 13501: class A2
- Options: paint with choice of color

OVERPRESSURE DAMPER FOR AXIAL FANS

This overpressure dampers are suitable to use on the roof of industrial building assembled on the axial fans

- Dimension: from request of customers
- Materials:
 - Galvanized Steel
 - Stainless Steel
 - Aluminium
- Damper with aluminum fins double knocker
- Protection network on outlet air

TRANSFORMATION CIRCULAR-RECTANGULAR

Transformations pieces in order to change the duct from circular to rectangular

- Dimension: from request of customers
- Materials:
 - Galvanized Steel
 - Stainless Steel
 - Aluminium

TUBAIR

Circular duct diffusers made with a modular system for the industrial buildings

- Dimension: from request of customers
- Materials:
 - Galvanized Steel
 - Stainless Steel
 - Aluminium

CONNECTION SYSTEM OF ABSOLUTE FILTER BOX

Connection system of absolute filter boxes in order to make a filter ceilings for hospital theatre

- Materials:
 - Galvanized Steel
 - Stainless Steel
 - Aluminium
- Dimension: from request of customers





BROCHURE_CLA_EN



Made in Italy